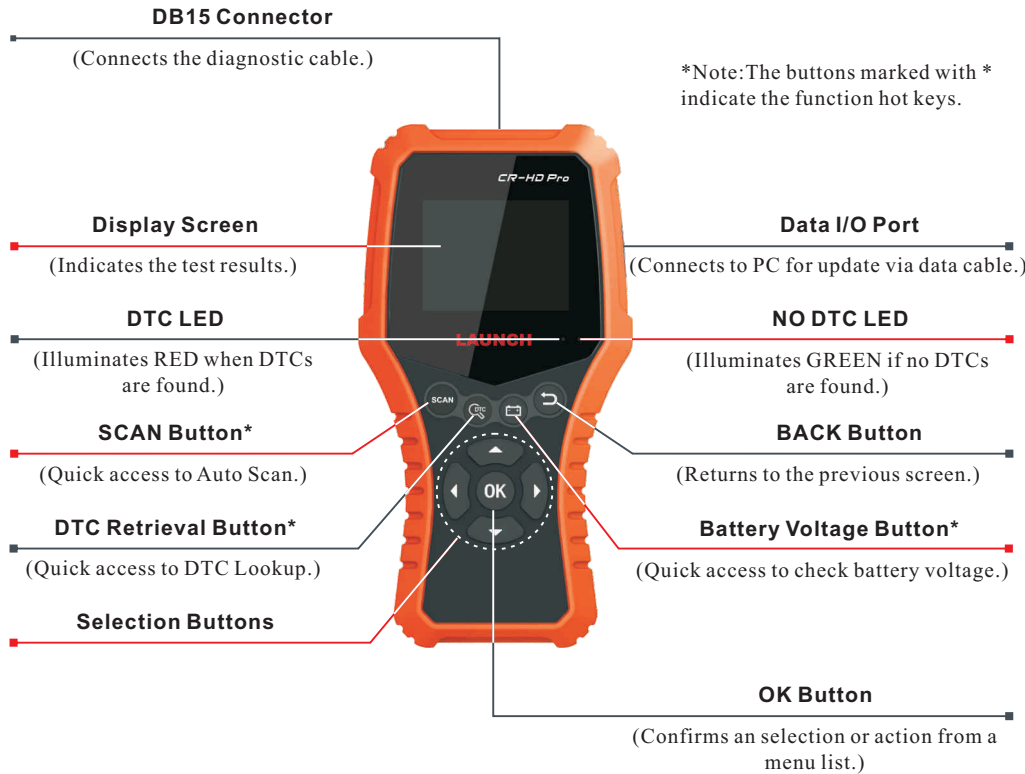


Product Profile



Accessory Checklist



Diagnostic Cable
To connect the CR-HD PRO to vehicle's OBD2 diagnostic socket.



OBD-6 Adaptor Cable
Standard 6-pin Deutsch adaptor for most heavy-duty vehicles. Covers 1995 to present Class 4-8 heavy-duty OEM.



OBD-9 Adaptor Cable
9-pin Deutsch adaptor for use with vehicles covering 1998 to present Class 4-8 heavy-duty OEM.



Data Cable
Connects the CR-HD PRO to PC to make update.

Preparation & Connection

1. Preparation

- 1) Switch the ignition on.
- 2) The vehicle battery voltage should be 11-14V or 18V-30V.
- 3) Throttle should be in a closed position.

2. Locate vehicle's DLC

The DLC(Data Link Connector) is typically a connector where diagnostic code readers interface with the vehicle's on-board computer. For heavy-duty vehicles, it is generally located in driver's cab. If the DLC cannot be found, refer to the vehicle's Repair Manual for the exact location.

3. Connection

Select the desired diagnostic connector according to the vehicle DLC type and then follow the steps below to proceed:

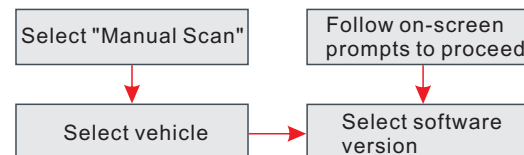
1. For vehicles equipped with an OBD II management system, plug one end of the diagnostic cable into the vehicle's DLC, and the other end into the DB15 connector of the tool and tighten the captive screws.
2. For vehicles not equipped with an OBD II management system, do the following:
 - 1). Select the corresponding non-16pin adaptor cable.
 - 2). Plug the non-16pin end of the adaptor cable into the DLC socket, and the other end to the diagnostic cable.
 - 3). Plug the other end of the diagnostic cable into the DB15 connector of the tool and tighten the captive screws.

Start Diagnostics

CR-HD PRO features two kinds of diagnostic approaches: Auto scan and Manual diagnosis.

1. Manual Diagnosis

In this mode, you have to diagnose a vehicle by performing the menu-driven command manually. For new users, please follow the operation chart shown below to get familiar with and start using this tool.

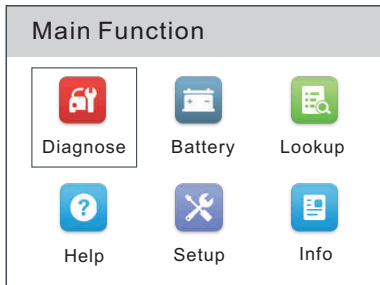


2. Auto Scan

This function allows you to scan the HD-OBD or EOBD II.

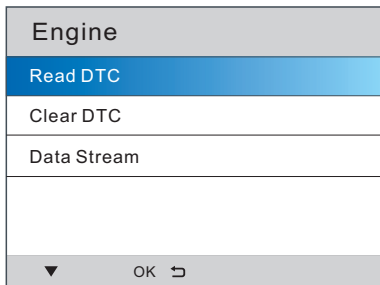
Statement: LAUNCH owns the complete intellectual property rights for the software used by this product. For any reverse engineering or cracking actions against the software, LAUNCH will block the use of this product and reserve the right to pursue their legal liabilities.

3. Function Modules



The icons in black at the bottom of the screen indicate the available actions, which can be done by pressing the corresponding buttons on the tool.

Main Diagnostic Features



Diagnose: Configures this tool to operate as a diagnostic tool.
Battery: Reads the vehicle's battery voltage.
Lookup: Retrieves the desired Diagnostic Trouble Code (DTC) from the DTC library.
Help: Lets you have a general knowledge of the OBD II, HD OBD and I/M Readiness.
Setup: Makes the system setting of the tool.
Info: Includes the tool information, including software & hardware version, and Serial Number etc.



Read DTC: Displays the detailed information of DTC records retrieved from the vehicle's control system.
Clear DTC: After reading the DTCs from the vehicle and certain repairs have been made, use this function to erase the codes from the vehicle. Before performing this function, please be sure the vehicle's ignition key is in the ON position with the engine off.
Data Stream: Lets you view and capture (record) real-time Live Data. It can also be used to guide vehicle repair.

4. Update

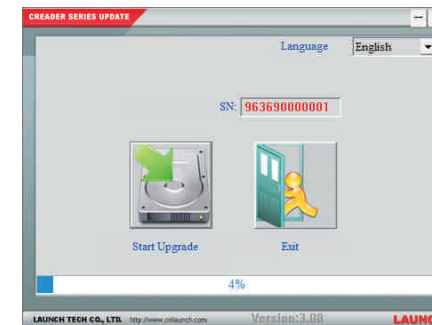
The tool can be updated via data cable.

*Note: Make sure the PC has an Internet connection.

1. Go to <http://mycar.x431.com/> and download the update tool to the computer.
2. Decompress and install it on your computer (compatible with Windows XP, Windows 7, Windows 8 & Windows 10).
3. After installation, connect one end of the data cable to the USB port of PC, and the other end to the tool.

*Note: If the tool is properly connected to the PC, the NO DTC LED illuminates green, and the DTC LED goes out. Otherwise, the red LED illuminates and the green LED lights off.

4. Launch the update tool on your PC, the system starts reading the tool. Once it obtains the tool information, it will directly navigate to the update center.



5. Click [Start Upgrade] to start updating.
6. Once update is complete, a "Upgrade success" message box will pop up and the tool will jump to the main function screen.
7. The update process is complete, your tool is now ready for use.

*Note: To enjoy more capabilities and functions, you are suggested to check for updates on a frequent basis and keep synchronized with the latest available software.



www.x431.com
www.cnlaunch.com

Thanks for choosing LAUNCH!

If you have any questions or comments on the operation of the unit, please contact LAUNCH Customer Service Center:

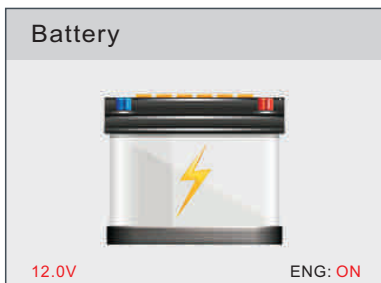
Phone: +86 755 8455 7891
 Email: overseas.service@cnlaunch.com

*WARNING: This device complies with Part 15 of the FCC Rules. Operation is subject to the following two conditions: (1) this device may not cause harmful interference, and (2) this device must accept any interference received, including interference that may cause undesired operation.

Battery Voltage

Reads the battery voltage to check the status of the battery.

*Note: This function can be accessed directly by pressing the button on the tool.



DTC Lookup

Provides access to libraries of OBD and OBD II DTC definitions.

*Note: This function can be accessed directly by pressing the button on the tool.

